

COMMISSIONERS:

- BILL PROCTOR
DISTRICT 1
- JIMBO JACKSON
DISTRICT 2
- RICK MINOR
DISTRICT 3
- BRYAN DESLOGE
DISTRICT 4
- KRISTIN DOZIER
DISTRICT 5
- MARY ANN LINDLEY AT-LARGE
- NICK MADDOX AT-LARGE
CHAIRMAN



VINCENT S. LONG
COUNTY ADMINISTRATOR

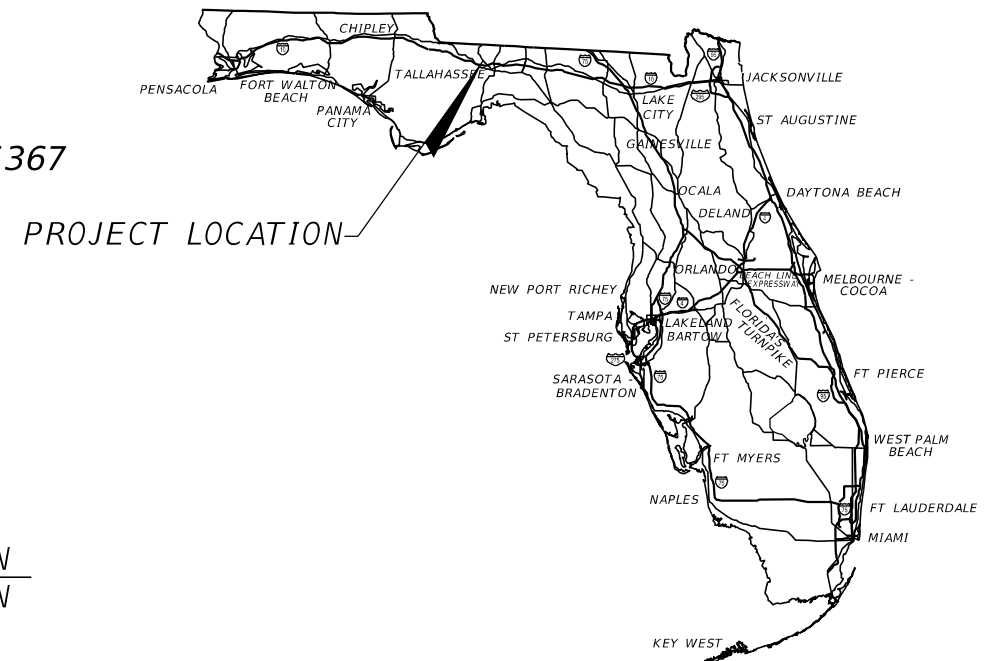
HERBERT W. A. THIELE
COUNTY ATTORNEY

BRENT PELL, P.E.
DIRECTOR OF PUBLIC WORKS

LEON COUNTY

DEPARTMENT OF PUBLIC WORKS DIVISION OF ENGINEERING SERVICES

PUBLIC WORKS CENTER
2280 MICCOSUKEE ROAD TALLAHASSEE, FL 32308-5367
PHONE: (850) 606-1500 *FAX: (850) 606-1501
FINANCIAL PROJECT ID 436621-1-58-01
LEON COUNTY (55050)

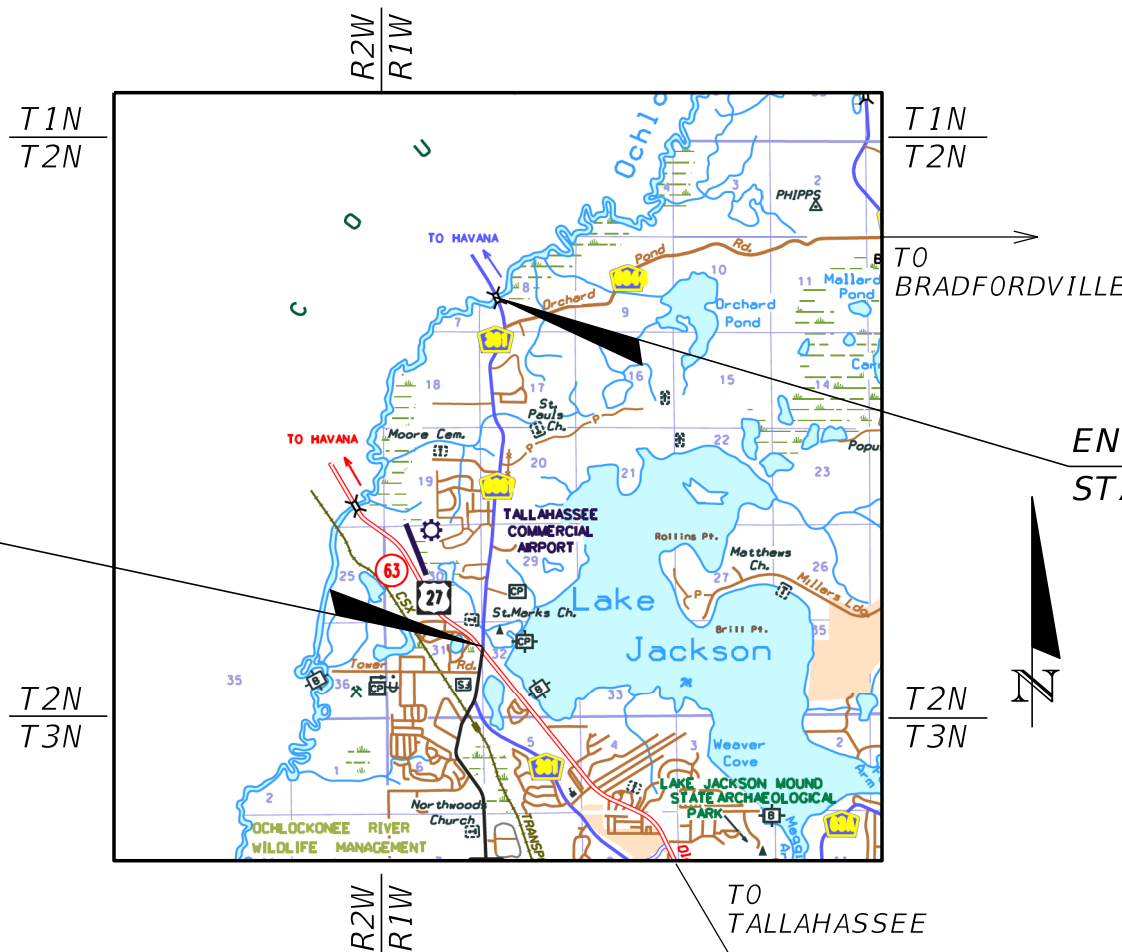


INDEX OF ROADWAY PLANS

SHEET NO.	SHEET DESCRIPTION
1	KEY SHEET
2	SIGNATURE SHEET
3	SUMMARY OF PAY ITEMS
4	PROJECT LAYOUT
5	GENERAL NOTES
6	TYPICAL DETAILS
7	SPECIAL DETAILS/EROSION CONTROL
8-37	ROADWAY AND SIGNING AND MARKING PLANS
38-39	GUIDESIGN WORKSHEETS
1-5	EXISTING SURVEY

**BEGIN PROJECT
STA. 100+00.00**

**END PROJECT
STA. 291+60.00**



GOVERNING STANDARD PLANS:

Florida Department of Transportation, FY 19-20 Standard Plans for Road and Bridge Construction and applicable Interim Revisions (IRs).

Standard Plans for Road Construction and associated IRs are available at the following website: <http://www.fdot.gov/design/standardplans>

GOVERNING STANDARD SPECIFICATIONS:

Florida Department of Transportation, July 2019 (Division II and III) Standard Specifications for Road and Bridge Construction at the following website: <http://www.fdot.gov/programmanagement/Implemented/SpecBooks>

ROADWAY PLANS

ENGINEER OF RECORD:

J.F. VRYNIOS, P.E.
P.E. LICENSE NUMBER 66045
GRESHAM SMITH
2073 SUMMIT LAKE DRIVE, SUITE 155
TALLAHASSEE, FL 32317
PHONE NO.: (850)219-8400
LEON COUNTY CONTRACT NO.:BC-19-194
VENDOR NO.:62-0794126
CERTIFICATE OF AUTHORIZATION 3806

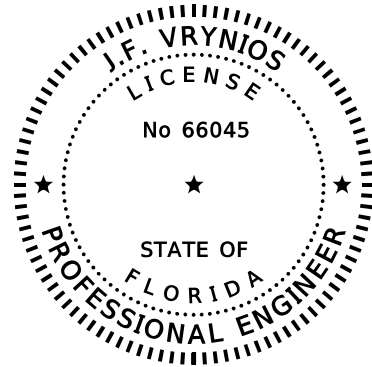
LEON COUNTY PROJECT MANAGER:

S. GEORGE SU, P.E.
PHONE NO: (850)606-1544

OLD BAINBRIDGE RD. (CR 361) FROM SR 63 (US 27) TO THE LEON COUNTY LINE

SAFETY IMPROVEMENT PROJECT

CONSTRUCTION CONTRACT NO.	FISCAL YEAR	SHEET NO.
	19	1



THIS ITEM HAS BEEN DIGITALLY
SIGNED AND SEALED BY

ON THE DATE ADJACENT TO THE SEAL

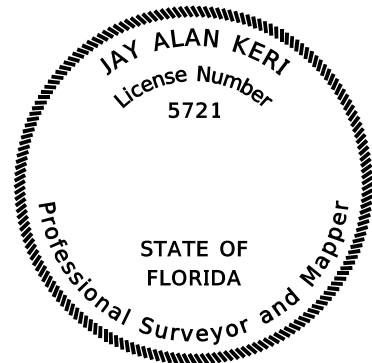
PRINTED COPIES OF THIS DOCUMENT ARE
NOT CONSIDERED SIGNED AND SEALED AND
THE SIGNATURE MUST BE VERIFIED
ON ANY ELECTRONIC COPIES.

GRESHAM SMITH
2073 SUMMIT LAKE DRIVE, SUITE 155
TALLAHASSEE, FLORIDA 32317
CERTIFICATE OF AUTHORIZATION #3806
J.F. VRYNIOS, P.E. NO. 66045

THE ABOVE NAMED PROFESSIONAL ENGINEER SHALL BE RESPONSIBLE FOR THE
FOLLOWING SHEETS IN ACCORDANCE WITH RULE 61G15-23.004, F.A.C.

ROADWAY PLANS

SHEET NO.	SHEET DESCRIPTION
1	KEY SHEET
2	SIGNATURE SHEET
3	SUMMARY OF PAY ITEMS
4	PROJECT LAYOUT
5	GENERAL NOTES
6	TYPICAL DETAILS
7	SPECIAL DETAILS/EROSION CONTROL
8-37	ROADWAY AND SIGNING AND MARKING PLANS
38-39	GUIDESIGN WORKSHEETS



THIS ITEM HAS BEEN DIGITALLY
SIGNED AND SEALED BY

ON THE DATE ADJACENT TO THE SEAL

PRINTED COPIES OF THIS DOCUMENT ARE
NOT CONSIDERED SIGNED AND SEALED AND
THE SIGNATURE MUST BE VERIFIED
ON ANY ELECTRONIC COPIES.

POOLE ENGINEERING & SURVEYING, INC.
2145 DELTA BLVD., SUITE 100
TALLAHASSEE, FLORIDA 32303
CERTIFICATE OF AUTHORIZATION #6745
JAY ALAN KERI, PSM #5721

THE ABOVE NAMED PROFESSIONAL SURVEYOR AND MAPPER SHALL BE RESPONSIBLE
FOR THE FOLLOWING SHEETS IN ACCORDANCE WITH RULE 5J-17.062, F.A.C.

ROADWAY PLANS

SHEET NO.	SHEET DESCRIPTION
02	SIGNATURE SHEET
1-5	EXISTING SURVEY

REVISIONS				J.F. VRYNIOS, P.E. P.E. LICENSE NUMBER 66045 GRESHAM SMITH 2073 SUMMIT LAKE DRIVE, SUITE 155 TALLAHASSEE, FL 32317 CERTIFICATE OF AUTHORIZATION 3806	STATE OF FLORIDA DEPARTMENT OF TRANSPORTATION			SHEET NO. 2
DATE	DESCRIPTION	DATE	DESCRIPTION		ROAD NO.	COUNTY	FINANCIAL PROJECT ID	
					CR 361	LEON	436621-1-58-01	

SIGNATURE SHEET

THE OFFICIAL RECORD OF THIS SHEET IS THE ELECTRONIC FILE DIGITALLY SIGNED AND SEALED UNDER RULE 61G15-23.004, F.A.C.

436621-1-58-01 Old Bainbridge Road (Leon County)

Item No.	Item Description	Unit	Quantity
101-1	MOBILIZATION	LS	1
102-1	MAINTENANCE OF TRAFFIC	LS	1
102-3	COMMERCIAL MATERIAL FOR TEMPORARY DRIVEWAY MAINTENANCE	CY	52.0
104-10-3	SEDIMENT BARRIER	LF	1112
110-1-1	CLEARING AND GRUBBING	AC	1.0
120-1	REGULAR EXCAVATION	CY	164.0
120-6	EMBANKMENT	CY	93.0
160-4	TYPE B STABILIZATION	SY	1832
162-1-11	PREPARED SOIL LAYER, FINISH SOIL, 6"	SY	2330
285-701	OPTIONAL BASE, BASE GROUP 01	SY	1455
337-7-80	ASPHALT CONCRETE FRICTION COURSE, TRAFFIC B, FC-9.5, PG 76-22	TN	73.4
430-174-218	PIPE CULVERT, OPTIONAL MATERIAL, OTHER SHAPE-ELLIP/ARCH, 18" SD	LF	220
430-984-125	MITERED END SECTION, OPTIONAL ROUND, 18"SD	EA	2
430-984-625	MITERED END SECTION, OPTIONAL-ELLIP/ARCH, 18" SD	EA	12
570-1-1	PERFORMANCE TURF	SY	2330
570-1-2	PERFORMANCE TURF, SOD	SY	2330
700-1-11	SINGLE POST SIGN, F&I GROUND MOUNT, UP TO 12 SF	AS	39
700-1-50	SINGLE POST SIGN, RELOCATE	AS	1
700-1-60	SINGLE POST SIGN, REMOVE	AS	5
700-3-101	SIGN PANEL, FURNISH & INSTALL GROUND MOUNT, UP TO 12 SF	EA	2
700-6-21	HIGHLIGHTED SIGN, F&I, GROUND MOUNT-SOLAR POWERED, UP TO 12 SF	AS	6
700-11-231	ELECTRONIC DISPLAY SIGN, FURNISH & INSTALL GROUND MOUNT-SOLAR POWER, SPEED FEEDBACK, UP TO 12 SF	AS	4
705-10-2	OBJECT MARKER, TYPE 2	EA	1
705-10-4	OBJECT MARKER, TYPE 4	EA	21
706-3	RETRO-REFLECTIVE/RAISED PAVEMENT MARKERS (W/R)	EA	854
706-3	RETRO-REFLECTIVE/RAISED PAVEMENT MARKERS (Y/Y)	EA	430
711-15-101	THERMOPLASTIC, STANDARD, OPEN GRADED ASPHALT SURFACES, WHITE, SOLID, 6"	GM	1.1

REVISIONS				J.F. VRYNIOS, P.E. P.E. LICENSE NUMBER 66045 GRESHAM SMITH 2073 SUMMIT LAKE DRIVE, SUITE 155 TALLAHASSEE, FL 32317 CERTIFICATE OF AUTHORIZATION 3806	STATE OF FLORIDA DEPARTMENT OF TRANSPORTATION			SUMMARY OF PAY ITEMS	SHEET NO.
DATE	DESCRIPTION	DATE	DESCRIPTION		ROAD NO.	COUNTY	FINANCIAL PROJECT ID		
					CR 631	LEON	436621-1-58-01		

THE OFFICIAL RECORD OF THIS SHEET IS THE ELECTRONIC FILE DIGITALLY SIGNED AND SEALED UNDER RULE 61G15-23.004, F.A.C.

CURVE DATA CL11
PI STA. = 101+51.85
Δ = 1° 58' 52" (LT)
D = 1° 59' 59"
T = 49.53
L = 99.06
R = 2,865.00
PC STA. = 101+02.32
PT STA. = 102+01.37

CURVE DATA CL12
PI STA. = 109+03.47
Δ = 0° 57' 45" (RT)
D = 0° 15' 00"
T = 192.50
L = 385.00
R = 22,918.00
PC STA. = 107+10.96
PT STA. = 110+95.97

CURVE DATA CL13
PI STA. = 125+36.53
Δ = 3° 54' 17" (RT)
D = 0° 45' 00"
T = 260.41
L = 520.62
R = 7,639.00
PC STA. = 122+76.12
PT STA. = 127+96.73

CURVE DATA CL14
PI STA. = 152+14.22
Δ = 5° 14' 26" (LT)
D = 1° 00' 00"
T = 262.23
L = 524.10
R = 5,730.00
PC STA. = 149+51.99
PT STA. = 154+76.09

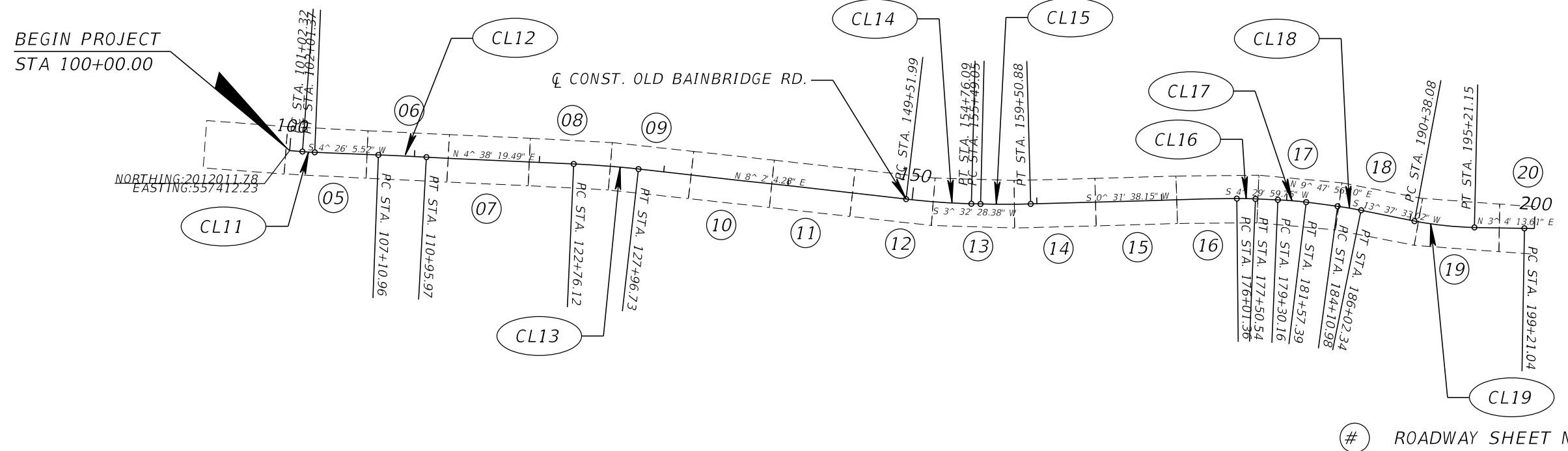
CURVE DATA CL15
PI STA. = 157+50.01
Δ = 3° 00' 50" (LT)
D = 0° 45' 00"
T = 200.96
L = 401.84
R = 7,639.00
PC STA. = 155+49.05
PT STA. = 159+50.88

CURVE DATA CL16
PI STA. = 176+75.97
Δ = 2° 59' 00" (RT)
D = 1° 59' 59"
T = 74.60
L = 149.18
R = 2,865.00
PC STA. = 176+01.36
PT STA. = 177+50.54

CURVE DATA CL17
PI STA. = 180+43.83
Δ = 4° 32' 39" (RT)
D = 1° 59' 59"
T = 113.67
L = 227.23
R = 2,865.00
PC STA. = 179+30.16
PT STA. = 181+57.39

CURVE DATA CL18
PI STA. = 185+06.70
Δ = 3° 49' 37" (RT)
D = 1° 59' 59"
T = 95.72
L = 191.36
R = 2,865.00
PC STA. = 184+10.98
PT STA. = 186+02.34

CURVE DATA CL19
PI STA. = 192+80.15
Δ = 9° 21' 25" (LT)
D = 1° 56' 13"
T = 242.07
L = 483.07
R = 2,958.00
PC STA. = 190+38.08
PT STA. = 195+21.15



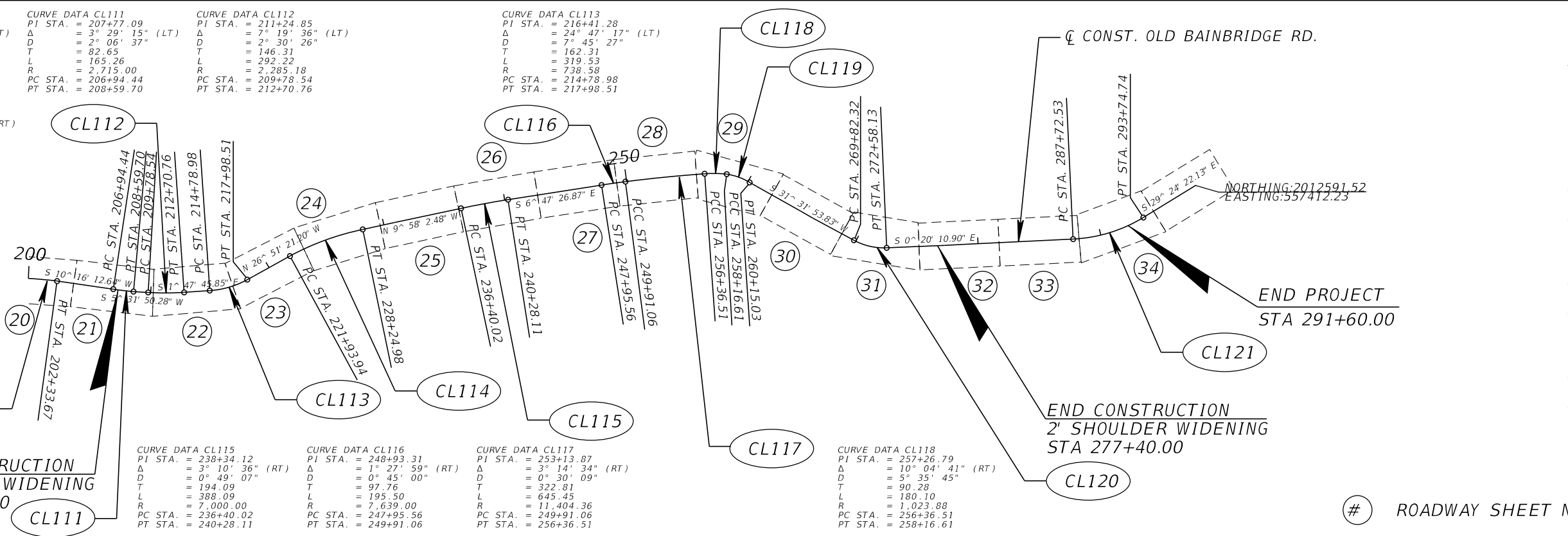
CURVE DATA CL110
PI STA. = 200+77.54
Δ = 6° 48' 39" (RT)
D = 2° 10' 43"
T = 156.50
L = 312.63
R = 2,630.00
PC STA. = 199+21.04
PT STA. = 202+33.67

CURVE DATA CL111
PI STA. = 207+77.09
Δ = 3° 29' 15" (LT)
D = 2° 06' 37"
T = 82.65
L = 165.26
R = 2,715.00
PC STA. = 206+94.44
PT STA. = 208+59.70

CURVE DATA CL112
PI STA. = 211+24.85
Δ = 7° 19' 36" (LT)
D = 2° 30' 26"
T = 146.31
L = 292.22
R = 2,285.18
PC STA. = 209+78.54
PT STA. = 212+70.76

CURVE DATA CL113
PI STA. = 216+41.28
Δ = 24° 47' 17" (LT)
D = 7° 45' 27"
T = 162.31
L = 319.53
R = 738.58
PC STA. = 214+78.98
PT STA. = 217+98.51

CURVE DATA CL114
PI STA. = 225+11.73
Δ = 16° 45' 44" (RT)
D = 2° 39' 23"
T = 317.79
L = 631.04
R = 2,157.00
PC STA. = 221+93.94
PT STA. = 228+24.98



CURVE DATA CL115
PI STA. = 238+34.12
Δ = 3° 10' 36" (RT)
D = 0° 49' 07"
T = 194.09
L = 388.09
R = 7,000.00
PC STA. = 236+40.02
PT STA. = 240+28.11

CURVE DATA CL116
PI STA. = 248+93.31
Δ = 1° 27' 59" (RT)
D = 0° 45' 00"
T = 97.76
L = 195.50
R = 7,639.00
PC STA. = 247+95.56
PT STA. = 249+91.06

CURVE DATA CL117
PI STA. = 253+13.87
Δ = 3° 14' 34" (RT)
D = 0° 30' 09"
T = 322.81
L = 645.45
R = 11,404.36
PC STA. = 249+91.06
PT STA. = 256+36.51

CURVE DATA CL118
PI STA. = 257+26.79
Δ = 10° 04' 41" (RT)
D = 5° 35' 45"
T = 90.28
L = 180.10
R = 1,023.88
PC STA. = 256+36.51
PT STA. = 258+16.61

CURVE DATA CL119
PI STA. = 259+17.15
Δ = 22° 51' 38" (RT)
D = 11° 31' 17"
T = 100.55
L = 198.42
R = 497.30
PC STA. = 258+16.61
PT STA. = 260+15.03

CURVE DATA CL120
PI STA. = 271+23.68
Δ = 30° 57' 21" (LT)
D = 11° 13' 26"
T = 141.36
L = 275.80
R = 510.49
PC STA. = 269+82.32
PT STA. = 272+58.13

CURVE DATA CL121
PI STA. = 290+80.12
Δ = 28° 45' 13" (LT)
D = 4° 46' 29"
T = 307.59
L = 602.21
R = 1,200.00
PC STA. = 287+72.53
PT STA. = 293+74.74

REVISIONS				J.F. VRYNIOS, P.E. P.E. LICENSE NUMBER 66045 GRESHAM SMITH 2073 SUMMIT LAKE DRIVE, SUITE 155 TALLAHASSEE, FL 32317 CERTIFICATE OF AUTHORIZATION 3806	STATE OF FLORIDA DEPARTMENT OF TRANSPORTATION			SHEET NO. 4
DATE	DESCRIPTION	DATE	DESCRIPTION		ROAD NO.	COUNTY	FINANCIAL PROJECT ID	
					CR 361	LEON	436621-158-01	

PROJECT LAYOUT

PROJECT NOTES
=====

TRAFFIC CONTROL PLAN NOTES
=====

1. BENCHMARK ELEVATIONS SHOWN ON THE PLANS ARE NORTH AMERICAN VERTICAL DATUM OF 1988 (NAVD 88)
2. THE LOCATION(S) OF UTILITIES SHOWN IN THE PLANS ARE BASED ON LIMITED INVESTIGATION AND SHOULD BE CONSIDERED APPROXIMATE. IT IS THE CONTRACTORS' RESPONSIBILITY TO DETERMINE THE LOCATION OF EXISTING UTILITES AND PROVIDE FOR THEIR PROTECTION.
3. UTILITY/AGENCY OWNERS: COMPANY TELEPHONE NUMBERS
TALQUIN ELECTRIC COOP - ELECTRIC (850) 508-0273
TALQUIN ELECTRIC COOP - WATER (850) 528-3963
CENTURY LINK - TELEPHONE (855) 742-6062
CENTURY LINK - FIBER (877) 366-8344
COMCAST - CATV (800) 778-9140
4. WORKING HOURS WILL NORMALLY BE FROM 9:00am TO 4:00pm MONDAY THROUGH FRIDAY, HOWEVER, UPON REQUEST OF THE CONTRACTOR, LEON COUNTY PUBLIC WORKS MAY CONSIDER AN ALTERNATIVE TO THESE WORKING HOURS BASED ON THE TIME OF YEAR, SITE, WEATHER AND TRAFFIC CONDITIONS. THERE WILL BE NO WORK SCHEDULED FOR THE FOLLOWING HOLIDAYS FOR THE YEAR 2019: NEW YEAR'S DAY, MARTIN LUTHER KING JR. DAY, MEMORIAL DAY, INDEPENDENCE DAY, LABOR DAY, VETERENS DAY, THANKSGIVING DAY, FRIDAY AFTER THANKSGIVING, CHRISTMAS DAY. IF WORK IS TO BE PERFORMED AFTER THE YEAR 2019, CONTRACTOR MUST CONSULT WITH THE COUNTY TO VERIFY THE HOLIDAY SCHEDULE.
5. EXISTING DRAINAGE STRUCTURES WITHIN CONSTRUCTION LIMITS SHALL REMAIN UNLESS OTHERWISE NOTED.
6. ALL WORK TO BE PERFORMED WITHIN THE MAINTAINED RIGHT OF WAY OF OLD BAINBRIDGE ROAD.
7. THE SPEED FEEDBACK SIGNS (ITEM NO. 700-11-231) SHALL BE ACTIVE FDOT APL CERTIFICATION 700-022-004, CARMANAH TECHNOLOGIES, MODEL SPEEDCHECK-15-AS OR APPROVED EQUIVALENT. CONTRACTOR MAY CONTACT TERRELL RUDD, CITY OF TALLAHASSEE TRAFFIC ENGINEERING (850)891-8274.
8. CLEARING AND GRUBBING INCLUDES REMOVAL OF TREE LIMBS IDENTIFIED ON SHEET 12 AND SHEET 13, REMOVAL OF TREES AS IDENTIFIED ON SHEET 25 AND SHEET 26, AND GRINDING OF AN EXISTING TREE STUMP IDENTIFIED ON SHEET 26. TREE REMOVAL INCLUDES STUMP GRINDING TO A DEPTH OF 12" (INCHES) BELOW GROUND SURFACE, STABILIZATION OF THE DISTURBED SURFACE WITH FINISH SOIL AND SOD. THE CONTRACTOR WILL PROVIDE AN ARBORIST TO OVERSEE THE TREE REMOVAL WORK.
9. THE CONTRACTOR SHALL SUBMIT A MAINTENANCE OF TRAFFIC (MOT) PLAN TO THE COUNTY PUBLIC WORKS DEPARTMENT 14 DAYS PRIOR TO COMMENCEMENT OF WORK REQUIRING FULL ROAD CLOSURE. BOTH LANES MUST BE OPEN TO TRAFFIC OUTSIDE OF THE WORKING HOURS OF 9:00am TO 4:00pm. THE MOT PLAN MUST INCLUDE DETOURS, DATES, AND TIMES.
10. LOCATION OF EXISTING SIGNAGE IS APPROXIMATE.
11. SEQUENCE OF SOIL DISTURBING ACTIVITIES. INSTALL PERIMETER CONTROLS AFTER CLEARING AND GRUBBING NECESSARY FOR INSTALLATION OF CONTROLS BUT BEFORE BEGINNING OTHER WORK FOR THE CONSTRUCTION PHASE. REMOVE PERIMETER CONTROLS ONLY AFTER ALL UPSTREAM AREAS ARE STABILIZED.
 1. INSTALLATION OF EROSION AND SEDIMENT CONTROL DEVICES PER BMPs (BEST MANAGEMENT PRACTICES)
 2. CLEARING AND GRUBBING OF AREAS OF CONSTRUCTION
 3. CONSTRUCTION OF DRAINAGE STRUCTURES AND PIPES
 4. EARTHWORK ASSOCIATED WITH THE CONSTRUCTION OF THE SHOULDER AND DITCH.

1. WORKING HOURS WILL NORMALLY BE FROM 9:00am TO 4:00pm MONDAY THROUGH FRIDAY, HOWEVER, UPON REQUEST OF THE CONTRACTOR, LEON COUNTY PUBLIC WORKS MAY CONSIDER AN ALTERNATIVE TO THESE WORKING HOURS BASED ON THE TIME OF YEAR, SITE, WEATHER AND TRAFFIC CONDITIONS.
2. THERE WILL BE NO WORK SCHEDULED FOR THE FOLLOWING HOLIDAYS FOR THE YEAR 2019: NEW YEAR'S DAY, MARTIN LUTHER KING JR. DAY, MEMORIAL DAY, INDEPENDENCE DAY, LABOR DAY, VETERENS DAY, THANKSGIVING DAY, FRIDAY AFTER THANKSGIVING, CHRISTMAS DAY. IF WORK IS TO BE PERFORMED AFTER THE YEAR 2019, CONTRACTOR MUST CONSULT WITH THE COUNTY TO VERIFY THE HOLIDAY SCHEDULE.
3. MAINTAIN ALL WORK ZONE TRAFFIC IN ACCORDANCE WITH FDOT STANDARDS INDEX 102-600, 102-602, AND 102-603
4. WORK ZONE SPEED SHALL BE THE POSTED SPEED LIMIT OF EACH WORK AREA. THE CONTRACTOR SHALL SUBMIT A MAINTENANCE OF TRAFFIC (MOT) PLAN TO THE COUNTY PUBLIC WORKS DEPARTMENT 14 DAYS PRIOR TO COMMENCEMENT OF WORK REQUIRING LANE CLOSURE. BOTH LANES MUST BE OPEN TO TRAFFIC OUTSIDE OF THE WORKING HOURS OF 9:00am TO 4:00pm. THE MOT PLAN MUST INCLUDE DETOURS IF REQUESTED, DATES, AND TIMES.

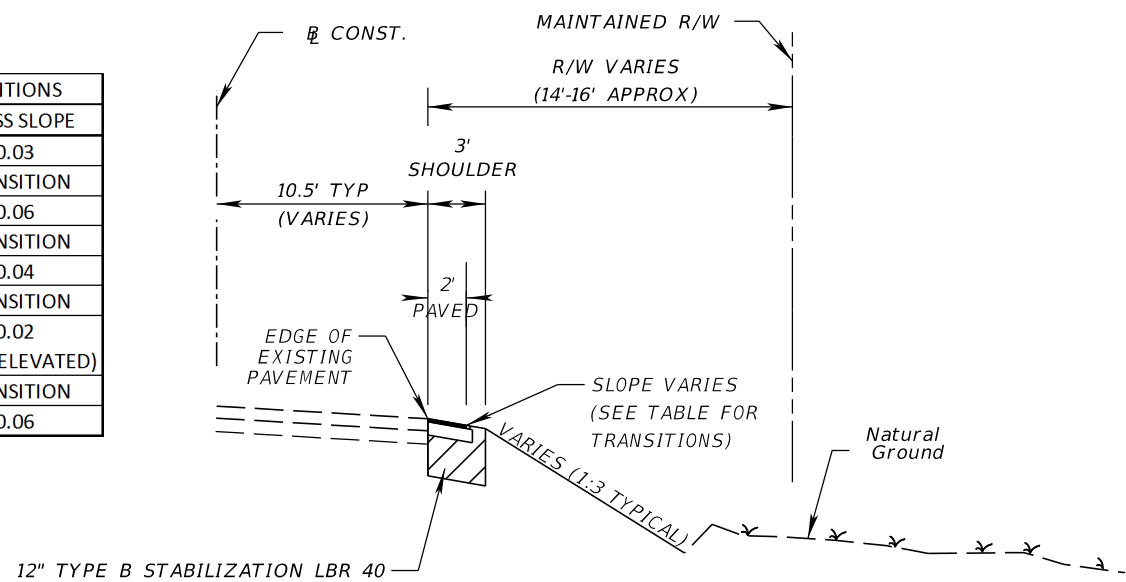
LEGEND

-  PROPOSED PAVEMENT
-  REPLACED DRIVEWAY
-  SEDIMENT BARRIER
-  EXISTING TREE

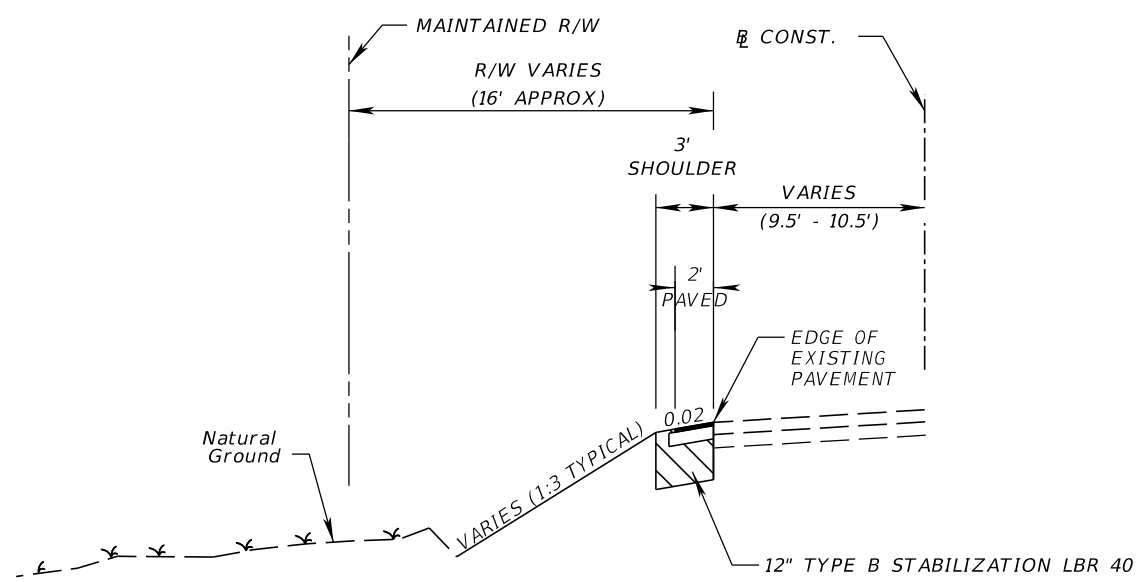
REVISIONS				J.F. VRYNIOS, P.E. P.E. LICENSE NUMBER 66045 GRESHAM SMITH 2073 SUMMIT LAKE DRIVE, SUITE 155 TALLAHASSEE, FL 32317 CERTIFICATE OF AUTHORIZATION 3806	STATE OF FLORIDA DEPARTMENT OF TRANSPORTATION			GENERAL NOTES	SHEET NO. 5
DATE	DESCRIPTION	DATE	DESCRIPTION		ROAD NO.	COUNTY	FINANCIAL PROJECT ID		
					CR 361	LEON	436621-1-58-01		

THE OFFICIAL RECORD OF THIS SHEET IS THE ELECTRONIC FILE DIGITALLY SIGNED AND SEALED UNDER RULE 61G15-23.004, F.A.C.

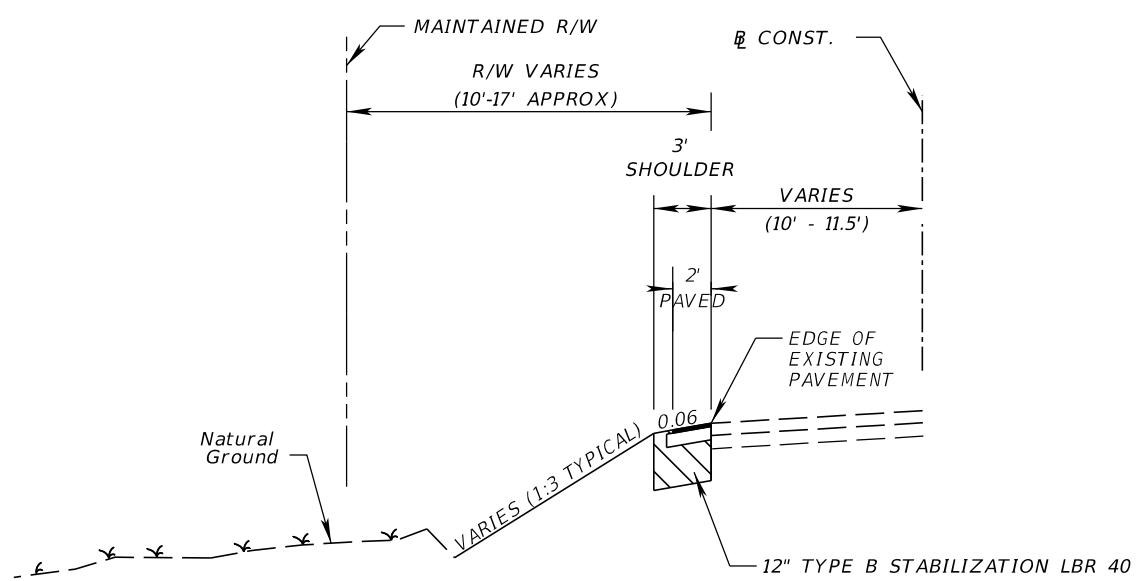
SHOULDER SLOPE TRANSITIONS		
STATION	STATION	CROSS SLOPE
208+55	210+00	0.03
210+00	210+50	TRANSITION
210+50	216+00	0.06
216+00	216+25	TRANSITION
216+25	217+50	0.04
217+50	218+00	TRANSITION
218+00	219+50	0.02 (SUPERELEVATED)
219+50	220+00	TRANSITION
220+00	221+00	0.06



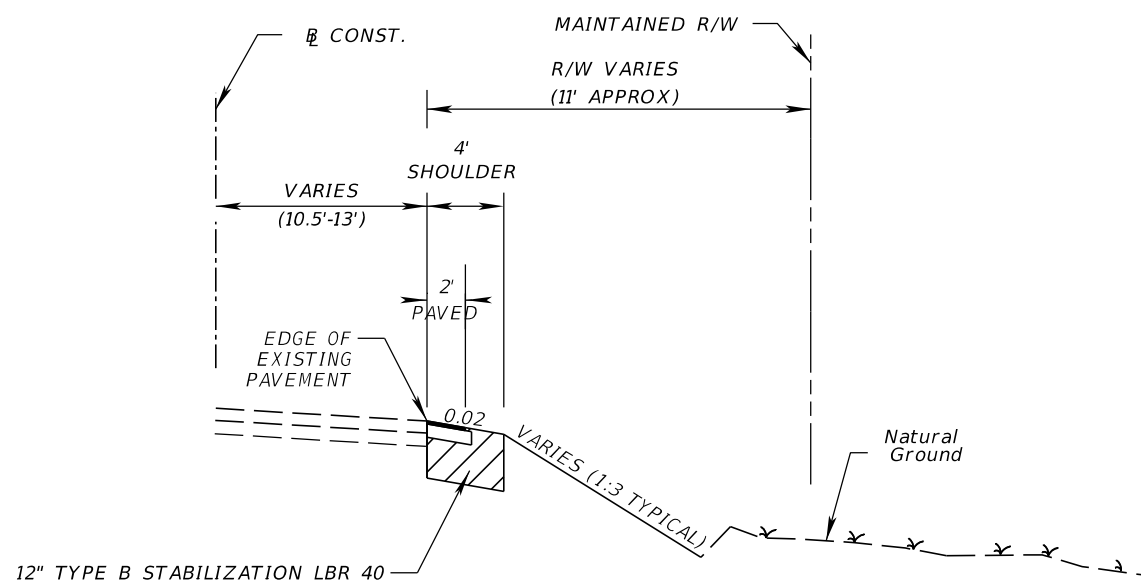
PROPOSED TYPICAL SECTION 1
STA. 208+55.00 TO 221+00.00 (RT)



PROPOSED TYPICAL SECTION 3
STA. 254+00.00 TO 265+06.42 (LT)



PROPOSED TYPICAL SECTION 2
STA. 221+00.00 TO 230+91.06 (LT)



PROPOSED TYPICAL SECTION 4
STA. 264+84.70 TO 277+40.00 (RT)

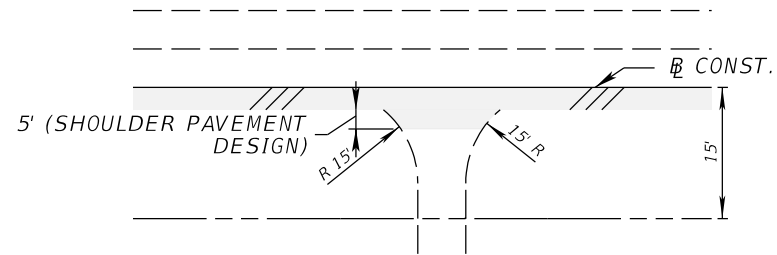
SHOULDER PAVEMENT
12" STABILIZED SUBGRADE TYPE B
OPTIONAL BASE GROUP 1
FRICTION COURSE FC-9.5 TRAFFIC B (1")

NOTE: CONSTRUCT PAVED SHOULDER
FROM EDGE OF EXISTING PAVEMENT.

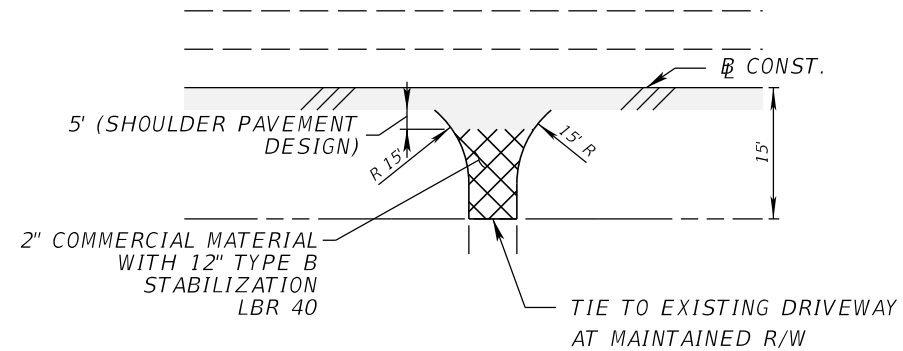
N.T.S.

REVISIONS				J.F. VRYNIOS, P.E. P.E. LICENSE NUMBER 66045 GRESHAM SMITH 2073 SUMMIT LAKE DRIVE, SUITE 155 TALLAHASSEE, FL 32317 CERTIFICATE OF AUTHORIZATION 3806	STATE OF FLORIDA DEPARTMENT OF TRANSPORTATION			SHEET NO. 6
DATE	DESCRIPTION	DATE	DESCRIPTION		ROAD NO.	COUNTY	FINANCIAL PROJECT ID	
					CR 361	LEON	436621-1-58-01	TYPICAL SECTION

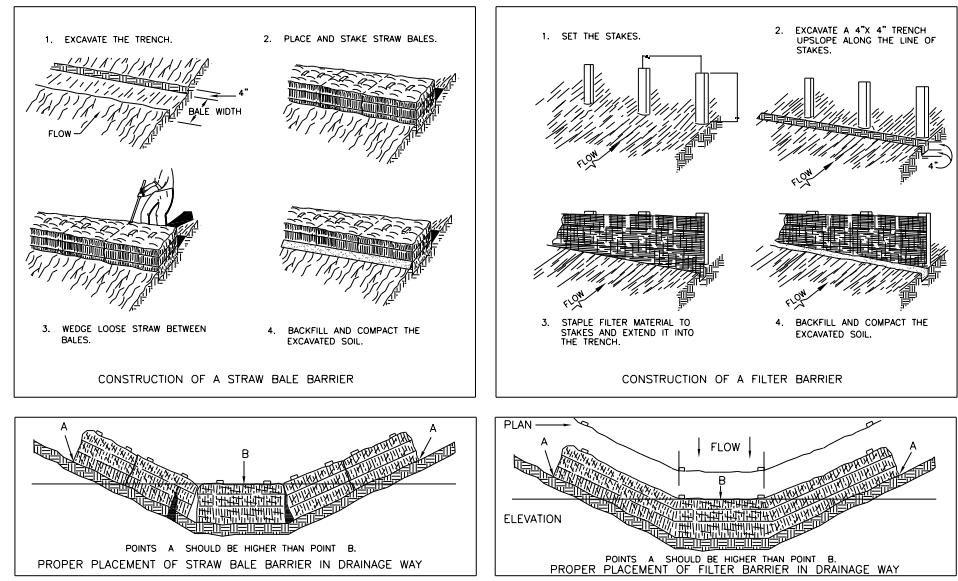
THE OFFICIAL RECORD OF THIS SHEET IS THE ELECTRONIC FILE DIGITALLY SIGNED AND SEALED UNDER RULE 61G15-23.004, F.A.C.



TYPICAL SECTION DETAIL
DRIVEWAY ACCESS PLAN VIEW



TYPICAL SECTION DETAIL
SIDE DRAIN REPLACEMENT
AT DRIVEWAY ACCESS
PLAN VIEW

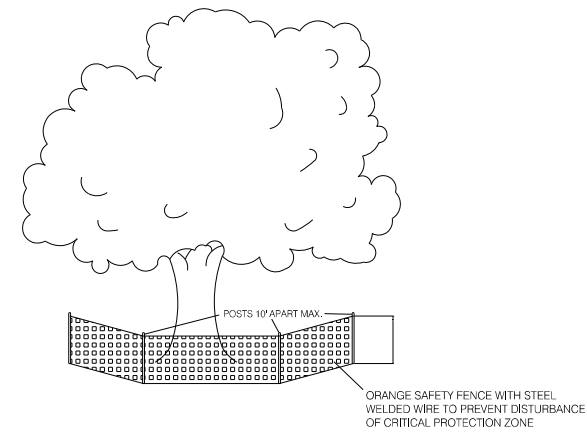


**EROSION CONTROL
BY SILT FENCE AND STAKED HAY BALE**

N.T.S.

LEGEND

- TB — TREE PROTECTION BARRIER
- SF — SILT FENCE
- IC — INLET CONTROL



TREE PROTECTION BARRICADE

NOTE:
CRITICAL PROTECTION ZONE REFERS TO THAT AREA OF A TREE WITHIN A CIRCLE DESCRIBED BY A RADIUS OF FOOT FOR EACH INCH OF THE TREES DBH.

REVISIONS				J.F. VRYNIOS, P.E. P.E. LICENSE NUMBER 66045 GRESHAM SMITH 2073 SUMMIT LAKE DRIVE, SUITE 155 TALLAHASSEE, FL 32317 CERTIFICATE OF AUTHORIZATION 3806	STATE OF FLORIDA DEPARTMENT OF TRANSPORTATION			SHEET NO. 7
DATE	DESCRIPTION	DATE	DESCRIPTION		ROAD NO.	COUNTY	FINANCIAL PROJECT ID	
					CR 361	LEON	436621-1-58-01	

THE OFFICIAL RECORD OF THIS SHEET IS THE ELECTRONIC FILE DIGITALLY SIGNED AND SEALED UNDER RULE 61G15-23.004, F.A.C.



REVISIONS				J.F. VRYNIOS, P.E. P.E. LICENSE NUMBER 66045 GRESHAM SMITH 2073 SUMMIT LAKE DRIVE, SUITE 155 TALLAHASSEE, FL 32317 CERTIFICATE OF AUTHORIZATION 3806	STATE OF FLORIDA DEPARTMENT OF TRANSPORTATION			SHEET NO. 8
DATE	DESCRIPTION	DATE	DESCRIPTION		ROAD NO.	COUNTY	FINANCIAL PROJECT ID	
					CR 361	LEON	436621-1-58-01	



MATCH LINE STA. 106+20.00

MATCH LINE STA. 112+70.00

REVISIONS				J.F. VRYNIOS, P.E. P.E. LICENSE NUMBER 66045 GRESHAM SMITH 2073 SUMMIT LAKE DRIVE, SUITE 155 TALLAHASSEE, FL 32317 CERTIFICATE OF AUTHORIZATION 3806	STATE OF FLORIDA DEPARTMENT OF TRANSPORTATION			SIGNING AND ROADWAY PLANS	SHEET NO. 9
DATE	DESCRIPTION	DATE	DESCRIPTION		ROAD NO.	COUNTY	FINANCIAL PROJECT ID		
					CR 361	LEON	436621-1-58-01		



MATCH LINE STA. 112+70.00

MATCH LINE STA. 119+20.00

REVISIONS				J.F. VRYNIOS, P.E. P.E. LICENSE NUMBER 66045 GRESHAM SMITH 2073 SUMMIT LAKE DRIVE, SUITE 155 TALLAHASSEE, FL 32317 CERTIFICATE OF AUTHORIZATION 3806	STATE OF FLORIDA DEPARTMENT OF TRANSPORTATION			SHEET NO. 10
DATE	DESCRIPTION	DATE	DESCRIPTION		ROAD NO.	COUNTY	FINANCIAL PROJECT ID	
				CR 361	LEON	436621-1-58-01		



MATCH LINE STA. 119+20.00

MATCH LINE STA. 125+70.00

REVISIONS				J.F. VRYNIOS, P.E. P.E. LICENSE NUMBER 66045 GRESHAM SMITH 2073 SUMMIT LAKE DRIVE, SUITE 155 TALLAHASSEE, FL 32317 CERTIFICATE OF AUTHORIZATION 3806	STATE OF FLORIDA DEPARTMENT OF TRANSPORTATION			SIGNING AND ROADWAY PLANS	SHEET NO. 11
DATE	DESCRIPTION	DATE	DESCRIPTION		ROAD NO.	COUNTY	FINANCIAL PROJECT ID		
					CR 361	LEON	436621-1-58-01		



MATCH LINE STA. 125+70.00

MATCH LINE STA. 132+20.00

REVISIONS				J.F. VRYNIOS, P.E. P.E. LICENSE NUMBER 66045 GRESHAM SMITH 2073 SUMMIT LAKE DRIVE, SUITE 155 TALLAHASSEE, FL 32317 CERTIFICATE OF AUTHORIZATION 3806	STATE OF FLORIDA DEPARTMENT OF TRANSPORTATION			SIGNING AND ROADWAY PLANS	SHEET NO. 12
DATE	DESCRIPTION	DATE	DESCRIPTION		ROAD NO.	COUNTY	FINANCIAL PROJECT ID		
				CR 361	LEON	436621-1-58-01			



MATCH LINE STA. 132+20.00

MATCH LINE STA. 138+70.00

REMOVE TREE LIMB OVER
ROADWAY APPROX. STA. 132+40

REVISIONS				J.F. VRYNIOS, P.E. P.E. LICENSE NUMBER 66045 GRESHAM SMITH 2073 SUMMIT LAKE DRIVE, SUITE 155 TALLAHASSEE, FL 32317 CERTIFICATE OF AUTHORIZATION 3806	STATE OF FLORIDA DEPARTMENT OF TRANSPORTATION			SIGNING AND ROADWAY PLANS	SHEET NO. 13
DATE	DESCRIPTION	DATE	DESCRIPTION		ROAD NO.	COUNTY	FINANCIAL PROJECT ID		
					CR 361	LEON	436621-1-58-01		



REVISIONS				J.F. VRYNIOS, P.E. P.E. LICENSE NUMBER 66045 GRESHAM SMITH 2073 SUMMIT LAKE DRIVE, SUITE 155 TALLAHASSEE, FL 32317 CERTIFICATE OF AUTHORIZATION 3806	STATE OF FLORIDA DEPARTMENT OF TRANSPORTATION			SIGNING AND ROADWAY PLANS	SHEET NO. 14
DATE	DESCRIPTION	DATE	DESCRIPTION		ROAD NO.	COUNTY	FINANCIAL PROJECT ID		
					CR 361	LEON	436621-1-58-01		



MATCH LINE STA. 145+20.00

MATCH LINE STA. 151+70.00

BEGIN Y/Y RPM AT 20' C.C. IN CENTER OF DOUBLE YELLOW STRIPE STA. 149+60.00

BEGIN W/R RPMs AT 20' C.C. ON WHITE EDGELINE STA. 149+60.00

REVISIONS				J.F. VRYNIOS, P.E. P.E. LICENSE NUMBER 66045 GRESHAM SMITH 2073 SUMMIT LAKE DRIVE, SUITE 155 TALLAHASSEE, FL 32317 CERTIFICATE OF AUTHORIZATION 3806	STATE OF FLORIDA DEPARTMENT OF TRANSPORTATION			SHEET NO. 15
DATE	DESCRIPTION	DATE	DESCRIPTION		ROAD NO.	COUNTY	FINANCIAL PROJECT ID	
					CR 361	LEON	436621-1-58-01	



REVISIONS				J.F. VRYNIOS, P.E. P.E. LICENSE NUMBER 66045 GRESHAM SMITH 2073 SUMMIT LAKE DRIVE, SUITE 155 TALLAHASSEE, FL 32317 CERTIFICATE OF AUTHORIZATION 3806	STATE OF FLORIDA DEPARTMENT OF TRANSPORTATION			SHEET NO. 16
DATE	DESCRIPTION	DATE	DESCRIPTION		ROAD NO.	COUNTY	FINANCIAL PROJECT ID	
				CR 361	LEON	436621-1-58-01	SIGNING AND ROADWAY PLANS	



MATCH LINE STA. 158+20.00

MATCH LINE STA. 164+70.00

END Y/Y RPM AT 20' C.C.
IN CENTER OF DOUBLE
YELLOW STRIPE
STA. 159+40.00

END W/R RPMS AT
20' C.C. ON WHITE
EDGE LINE STA. 159+40.00

FRIENDSHIP AME
CHURCH

REVISIONS				J.F. VRYNIOS, P.E. P.E. LICENSE NUMBER 66045 GRESHAM SMITH 2073 SUMMIT LAKE DRIVE, SUITE 155 TALLAHASSEE, FL 32317 CERTIFICATE OF AUTHORIZATION 3806	STATE OF FLORIDA DEPARTMENT OF TRANSPORTATION			SHEET NO. 17
DATE	DESCRIPTION	DATE	DESCRIPTION		ROAD NO.	COUNTY	FINANCIAL PROJECT ID	
					CR 361	LEON	436621-1-58-01	



MATCH LINE STA. 164+70.00

MATCH LINE STA. 171+20.00

REVISIONS				J.F. VRYNIOS, P.E. P.E. LICENSE NUMBER 66045 GRESHAM SMITH 2073 SUMMIT LAKE DRIVE, SUITE 155 TALLAHASSEE, FL 32317 CERTIFICATE OF AUTHORIZATION 3806	STATE OF FLORIDA DEPARTMENT OF TRANSPORTATION			SIGNING AND ROADWAY PLANS	SHEET NO. 18
DATE	DESCRIPTION	DATE	DESCRIPTION		ROAD NO.	COUNTY	FINANCIAL PROJECT ID		
				CR 361	LEON	436621-1-58-01			



MATCH LINE STA. 171+20.00

MATCH LINE STA. 177+70.00

REVISIONS				J.F. VRYNIOS, P.E. P.E. LICENSE NUMBER 66045 GRESHAM SMITH 2073 SUMMIT LAKE DRIVE, SUITE 155 TALLAHASSEE, FL 32317 CERTIFICATE OF AUTHORIZATION 3806	STATE OF FLORIDA DEPARTMENT OF TRANSPORTATION			SHEET NO. 19
DATE	DESCRIPTION	DATE	DESCRIPTION		ROAD NO.	COUNTY	FINANCIAL PROJECT ID	
				CR 361	LEON	436621-1-58-01		



MATCH LINE STA. 177+70.00

MATCH LINE STA. 184+20.00

REVISIONS				J.F. VRYNIOS, P.E. P.E. LICENSE NUMBER 66045 GRESHAM SMITH 2073 SUMMIT LAKE DRIVE, SUITE 155 TALLAHASSEE, FL 32317 CERTIFICATE OF AUTHORIZATION 3806	STATE OF FLORIDA DEPARTMENT OF TRANSPORTATION			SHEET NO. 20
DATE	DESCRIPTION	DATE	DESCRIPTION		ROAD NO.	COUNTY	FINANCIAL PROJECT ID	
				CR 361	LEON	436621-1-58-01		



MATCH LINE STA. 184+20.00

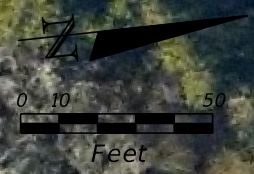
MATCH LINE STA. 190+70.00



REVISIONS				J.F. VRYNIOS, P.E. P.E. LICENSE NUMBER 66045 GRESHAM SMITH 2073 SUMMIT LAKE DRIVE, SUITE 155 TALLAHASSEE, FL 32317 CERTIFICATE OF AUTHORIZATION 3806	STATE OF FLORIDA DEPARTMENT OF TRANSPORTATION			SIGNING AND ROADWAY PLANS	SHEET NO. 21
DATE	DESCRIPTION	DATE	DESCRIPTION		ROAD NO.	COUNTY	FINANCIAL PROJECT ID		
					CR 361	LEON	436621-1-58-01		



REVISIONS				J.F. VRYNIOS, P.E. P.E. LICENSE NUMBER 66045 GRESHAM SMITH 2073 SUMMIT LAKE DRIVE, SUITE 155 TALLAHASSEE, FL 32317 CERTIFICATE OF AUTHORIZATION 3806	STATE OF FLORIDA DEPARTMENT OF TRANSPORTATION			SIGNING AND ROADWAY PLANS	SHEET NO.
DATE	DESCRIPTION	DATE	DESCRIPTION		ROAD NO.	COUNTY	FINANCIAL PROJECT ID		22
				CR 361	LEON	436621-1-58-01			



REVISIONS				J.F. VRYNIOS, P.E. P.E. LICENSE NUMBER 66045 GRESHAM SMITH 2073 SUMMIT LAKE DRIVE, SUITE 155 TALLAHASSEE, FL 32317 CERTIFICATE OF AUTHORIZATION 3806	STATE OF FLORIDA DEPARTMENT OF TRANSPORTATION			SHEET NO. 23
DATE	DESCRIPTION	DATE	DESCRIPTION		ROAD NO.	COUNTY	FINANCIAL PROJECT ID	
				CR 361	LEON	436621-1-58-01		



REVISIONS				J.F. VRYNIOS, P.E. P.E. LICENSE NUMBER 66045 GRESHAM SMITH 2073 SUMMIT LAKE DRIVE, SUITE 155 TALLAHASSEE, FL 32317 CERTIFICATE OF AUTHORIZATION 3806	STATE OF FLORIDA DEPARTMENT OF TRANSPORTATION			SHEET NO. 24
DATE	DESCRIPTION	DATE	DESCRIPTION		ROAD NO.	COUNTY	FINANCIAL PROJECT ID	
				CR 361	LEON	436621-1-58-01		



REVISIONS				J.F. VRYNIOS, P.E. P.E. LICENSE NUMBER 66045 GRESHAM SMITH 2073 SUMMIT LAKE DRIVE, SUITE 155 TALLAHASSEE, FL 32317 CERTIFICATE OF AUTHORIZATION 3806	STATE OF FLORIDA DEPARTMENT OF TRANSPORTATION			SHEET NO. 25
DATE	DESCRIPTION	DATE	DESCRIPTION		ROAD NO.	COUNTY	FINANCIAL PROJECT ID	
				CR 361	LEON	436621-1-58-01		



NOTE:
FIBER OPTIC BANK (ONE BUNDLE OF 3
CONDUIT) EXISTS ALONG EDGE OF
ROADWAY ON WEST SIDE. DEPTH TO
BE ESTIMATED @ 48" OR DEEPER.



MATCH LINE STA. 216+70.00

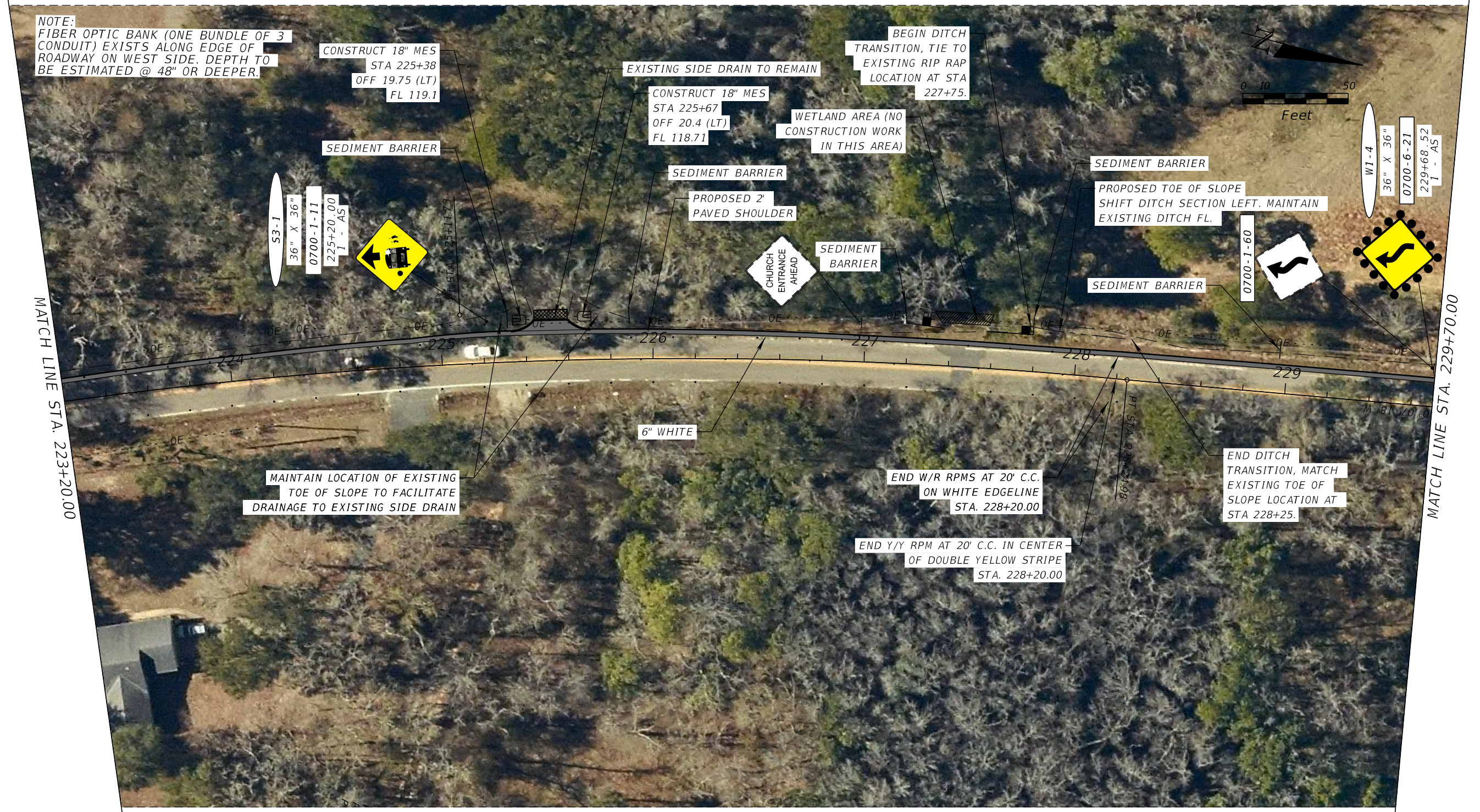
MATCH LINE STA. 223+20.00

W1-8
18" X 24"
0700-1-11
217+00.00
2 - AS

W1-8
18" X 24"
0700-1-11
218+20.00
2 - AS

ST. PAUL MISSIONARY
BAPTIST CHURCH

REVISIONS				J.F. VRYNIOS, P.E. P.E. LICENSE NUMBER 66045 GRESHAM SMITH 2073 SUMMIT LAKE DRIVE, SUITE 155 TALLAHASSEE, FL 32317 CERTIFICATE OF AUTHORIZATION 3806	STATE OF FLORIDA DEPARTMENT OF TRANSPORTATION			SHEET NO. 26
DATE	DESCRIPTION	DATE	DESCRIPTION		ROAD NO.	COUNTY	FINANCIAL PROJECT ID	
					CR 361	LEON	436621-1-58-01	



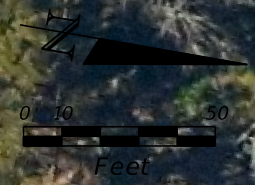
MATCH LINE STA. 223+20.00

MATCH LINE STA. 229+70.00

REVISIONS				J.F. VRYNIOS, P.E. P.E. LICENSE NUMBER 66045 GRESHAM SMITH 2073 SUMMIT LAKE DRIVE, SUITE 155 TALLAHASSEE, FL 32317 CERTIFICATE OF AUTHORIZATION 3806	STATE OF FLORIDA DEPARTMENT OF TRANSPORTATION			SHEET NO. 27
DATE	DESCRIPTION	DATE	DESCRIPTION		ROAD NO.	COUNTY	FINANCIAL PROJECT ID	
					CR 361	LEON	436621-1-58-01	



NOTE:
FIBER OPTIC BANK (ONE BUNDLE OF 3
CONDUIT) EXISTS ALONG EDGE OF
ROADWAY ON WEST SIDE. DEPTH TO
BE ESTIMATED @ 48" OR DEEPER.



MATCH LINE STA. 229+70.00

MATCH LINE STA. 236+20.00

REVISIONS				J.F. VRYNIOS, P.E. P.E. LICENSE NUMBER 66045 GRESHAM SMITH 2073 SUMMIT LAKE DRIVE, SUITE 155 TALLAHASSEE, FL 32317 CERTIFICATE OF AUTHORIZATION 3806	STATE OF FLORIDA DEPARTMENT OF TRANSPORTATION			SHEET NO. 28
DATE	DESCRIPTION	DATE	DESCRIPTION		ROAD NO.	COUNTY	FINANCIAL PROJECT ID	
					CR 361	LEON	436621-1-58-01	



REVISIONS				J.F. VRYNIOS, P.E. P.E. LICENSE NUMBER 66045 GRESHAM SMITH 2073 SUMMIT LAKE DRIVE, SUITE 155 TALLAHASSEE, FL 32317 CERTIFICATE OF AUTHORIZATION 3806	STATE OF FLORIDA DEPARTMENT OF TRANSPORTATION			SHEET NO. 29
DATE	DESCRIPTION	DATE	DESCRIPTION		ROAD NO.	COUNTY	FINANCIAL PROJECT ID	
				CR 361	LEON	436621-1-58-01	SIGNING AND ROADWAY PLANS	



REVISIONS				J.F. VRYNIOS, P.E. P.E. LICENSE NUMBER 66045 GRESHAM SMITH 2073 SUMMIT LAKE DRIVE, SUITE 155 TALLAHASSEE, FL 32317 CERTIFICATE OF AUTHORIZATION 3806	STATE OF FLORIDA DEPARTMENT OF TRANSPORTATION			SHEET NO. 30
DATE	DESCRIPTION	DATE	DESCRIPTION		ROAD NO.	COUNTY	FINANCIAL PROJECT ID	
				CR 361	LEON	436621-1-58-01		



NOTE:
FIBER OPTIC BANK (ONE BUNDLE OF 3
CONDUIT) EXISTS ALONG EDGE OF
ROADWAY ON WEST SIDE. DEPTH TO
BE ESTIMATED @ 48" OR DEEPER.



CONST 49 LF OF 14"X23" ERCP WITH 18" MES
STA 255+70
OFFSET 18.4 LT (APPROX.)
FL 143.0 (APPROX.)

BEGIN SHOULDER WIDENING (LT)
STA 254+00.00

PROPOSED 2' PAVED SHOULDER

SEDIMENT
BARRIER
LVK 33

BEGIN 6" WHITE

W/R RPMS AT 20' C.C.
ON WHITE EDGE LINE

Y/Y RPM AT 20' C.C. IN CENTER
OF DOUBLE YELLOW STRIPE

MANOR DRIVE

MATCH LINE STA. 249+20.00

MATCH LINE STA. 255+70.00

REVISIONS				J.F. VRYNIOS, P.E. P.E. LICENSE NUMBER 66045 GRESHAM SMITH 2073 SUMMIT LAKE DRIVE, SUITE 155 TALLAHASSEE, FL 32317 CERTIFICATE OF AUTHORIZATION 3806	STATE OF FLORIDA DEPARTMENT OF TRANSPORTATION			SIGNING AND ROADWAY PLANS	SHEET NO. 31
DATE	DESCRIPTION	DATE	DESCRIPTION		ROAD NO.	COUNTY	FINANCIAL PROJECT ID		
					CR 361	LEON	436621-1-58-01		



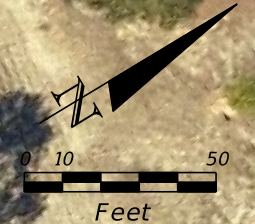
NOTE:
FIBER OPTIC BANK (ONE BUNDLE OF 3
CONDUIT) EXISTS ALONG EDGE OF
ROADWAY ON WEST SIDE. DEPTH TO
BE ESTIMATED @ 48" OR DEEPER.



REVISIONS				J.F. VRYNIOS, P.E. P.E. LICENSE NUMBER 66045 GRESHAM SMITH 2073 SUMMIT LAKE DRIVE, SUITE 155 TALLAHASSEE, FL 32317 CERTIFICATE OF AUTHORIZATION 3806	STATE OF FLORIDA DEPARTMENT OF TRANSPORTATION			SHEET NO. 32
DATE	DESCRIPTION	DATE	DESCRIPTION		ROAD NO.	COUNTY	FINANCIAL PROJECT ID	
					CR 361	LEON	436621-1-58-01	



NOTE:
FIBER OPTIC BANK (ONE BUNDLE OF 3
CONDUIT) EXISTS ALONG EDGE OF
ROADWAY ON WEST SIDE. DEPTH TO
BE ESTIMATED @ 48" OR DEEPER.



MATCH LINE STA. 262+20.00

MATCH LINE STA. 268+70.00

REVISIONS				J.F. VRYNIOS, P.E. P.E. LICENSE NUMBER 66045 GRESHAM SMITH 2073 SUMMIT LAKE DRIVE, SUITE 155 TALLAHASSEE, FL 32317 CERTIFICATE OF AUTHORIZATION 3806	STATE OF FLORIDA DEPARTMENT OF TRANSPORTATION			SIGNING AND ROADWAY PLANS	SHEET NO. 33
DATE	DESCRIPTION	DATE	DESCRIPTION		ROAD NO.	COUNTY	FINANCIAL PROJECT ID		
				CR 361	LEON	436621-1-58-01			



REVISIONS				J.F. VRYNIOS, P.E. P.E. LICENSE NUMBER 66045 GRESHAM SMITH 2073 SUMMIT LAKE DRIVE, SUITE 155 TALLAHASSEE, FL 32317 CERTIFICATE OF AUTHORIZATION 3806	STATE OF FLORIDA DEPARTMENT OF TRANSPORTATION			SHEET NO. 34
DATE	DESCRIPTION	DATE	DESCRIPTION		ROAD NO.	COUNTY	FINANCIAL PROJECT ID	
				CR 361	LEON	436621-1-58-01		



MATCH LINE STA. 275+20.00

MATCH LINE STA. 281+70.00



REVISIONS				J.F. VRYNIOS, P.E. P.E. LICENSE NUMBER 66045 GRESHAM SMITH 2073 SUMMIT LAKE DRIVE, SUITE 155 TALLAHASSEE, FL 32317 CERTIFICATE OF AUTHORIZATION 3806	STATE OF FLORIDA DEPARTMENT OF TRANSPORTATION			SHEET NO. 35
DATE	DESCRIPTION	DATE	DESCRIPTION		ROAD NO.	COUNTY	FINANCIAL PROJECT ID	
				CR 361	LEON	436621-1-58-01		

THE OFFICIAL RECORD OF THIS SHEET IS THE ELECTRONIC FILE DIGITALLY SIGNED AND SEALED UNDER RULE 61G15-23.004, F.A.C.



MATCH LINE STA. 281+70.00

MATCH LINE STA. 288+20.00

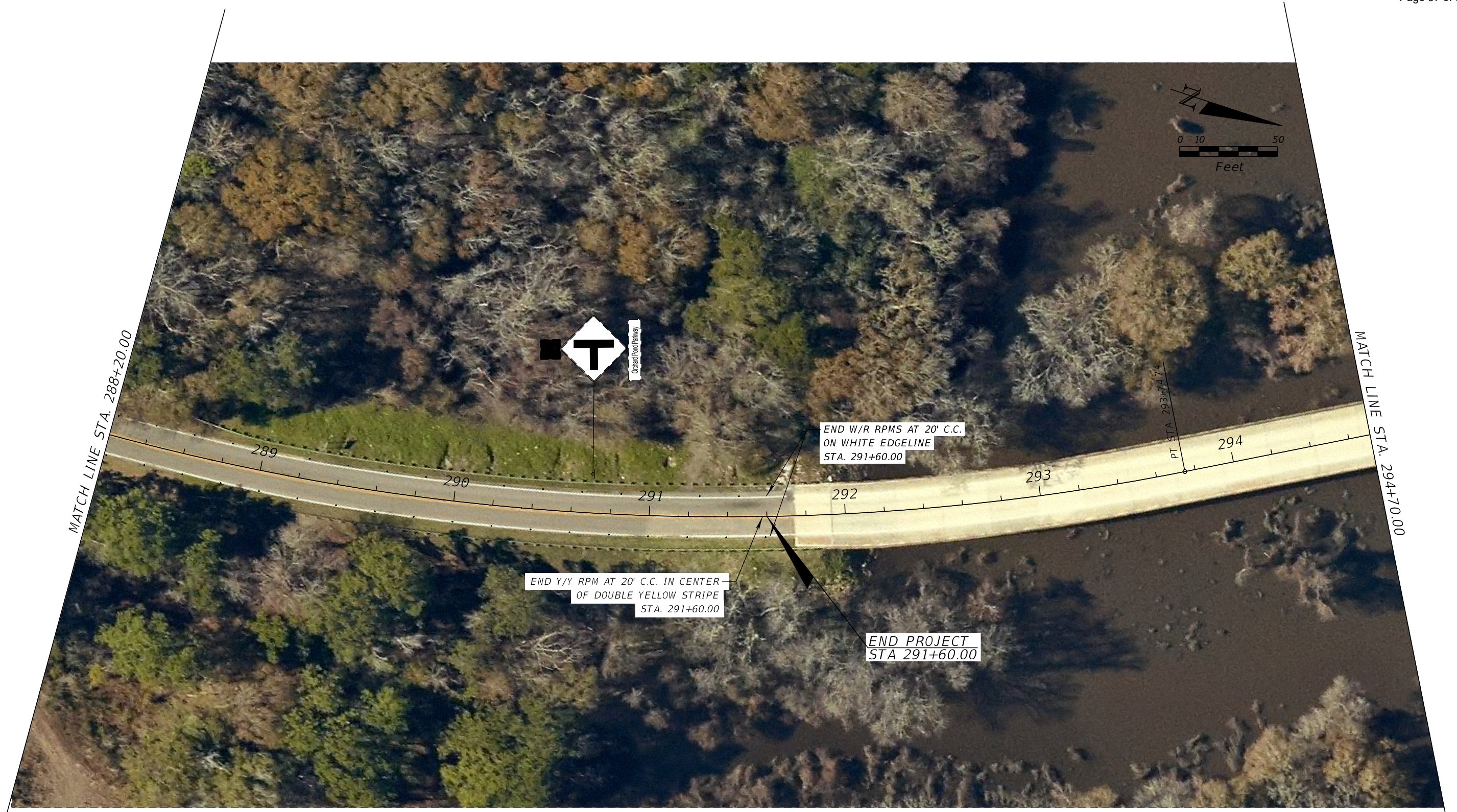


BEGIN W/R RPMS
AT 20' C.C.
ON WHITE
EDGE LINE
STA. 278+80.00

BEGIN Y/Y RPM
AT 20' C.C.
IN CENTER
OF DOUBLE
YELLOW STRIPE
STA. 278+80.00

REVISIONS				J.F. VRYNIOS, P.E. P.E. LICENSE NUMBER 66045 GRESHAM SMITH 2073 SUMMIT LAKE DRIVE, SUITE 155 TALLAHASSEE, FL 32317 CERTIFICATE OF AUTHORIZATION 3806	STATE OF FLORIDA DEPARTMENT OF TRANSPORTATION			SHEET NO. 36
DATE	DESCRIPTION	DATE	DESCRIPTION		ROAD NO.	COUNTY	FINANCIAL PROJECT ID	
					CR 361	LEON	436621-1-58-01	

THE OFFICIAL RECORD OF THIS SHEET IS THE ELECTRONIC FILE DIGITALLY SIGNED AND SEALED UNDER RULE 61G15-23.004, F.A.C.



REVISIONS				J.F. VRYNIOS, P.E. P.E. LICENSE NUMBER 66045 GRESHAM SMITH 2073 SUMMIT LAKE DRIVE, SUITE 155 TALLAHASSEE, FL 32317 CERTIFICATE OF AUTHORIZATION 3806	STATE OF FLORIDA DEPARTMENT OF TRANSPORTATION			SHEET NO. 37
DATE	DESCRIPTION	DATE	DESCRIPTION		ROAD NO.	COUNTY	FINANCIAL PROJECT ID	
				CR 361	LEON	436621-1-58-01		

THE OFFICIAL RECORD OF THIS SHEET IS THE ELECTRONIC FILE DIGITALLY SIGNED AND SEALED UNDER RULE 61G15-23.004, F.A.C.

